

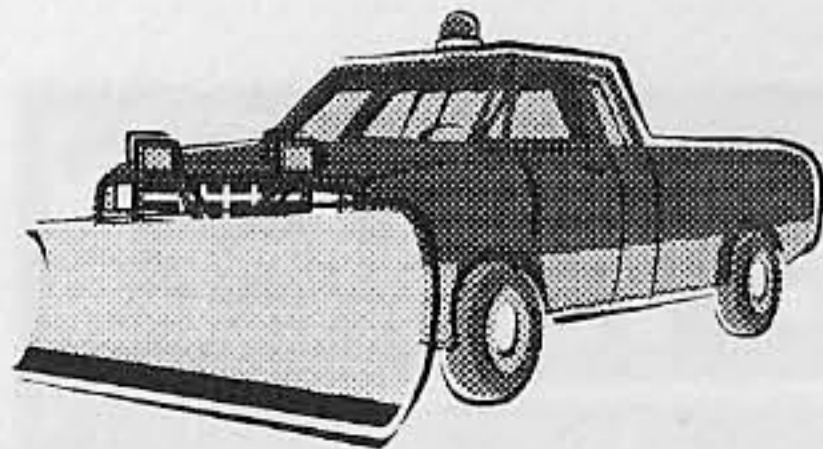
PROFESSIONAL PROBLEM SOLVERS

SERVING THESE MARKETS

- ⇒ **Hospitals\Schools**
- ⇒ **Commercial Lots**
- ⇒ **Apartments\Condos**
- ⇒ **Residential Walks
and Driveways**

OFFERING THESE BENEFITS

- ⇒ **24 HOUR SERVICE**
- ⇒ **Plowing\Snow Blowing**
- ⇒ **Deicing\Sanding**
- ⇒ **Haul-Off**



SNOW REMOVAL

Galloway Snowplowing has been providing snow removal services for the Spokane area for decades. Galloway Company services hundreds of clients in Spokane. They have dozens of available trucks and snow blowers to provide the dependable emergency service you require. Sign up now for automatic service.

**We are on call
24 Hours a Day**



**GALLOWAY
SNOW PLOWING**

Tom Galloway
4108 E. 22nd Ave.
Spokane, WA 99223
(509) 535-9176

LICENSED • BONDED • INSURED • GALLOCC0660Z



**GRANULAR
ICE MELT**

Winter
2001-2002



**Galloway Snow Removal
Service**

Call 535-9176

Credit Card orders only

Ice Melt Pricing

Ice Melt Plus

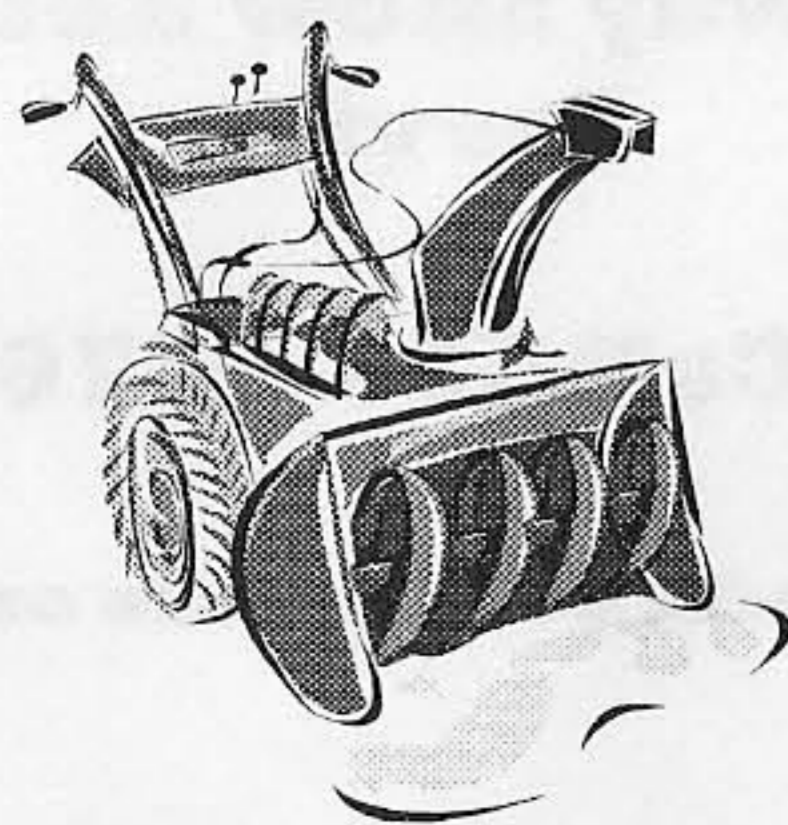
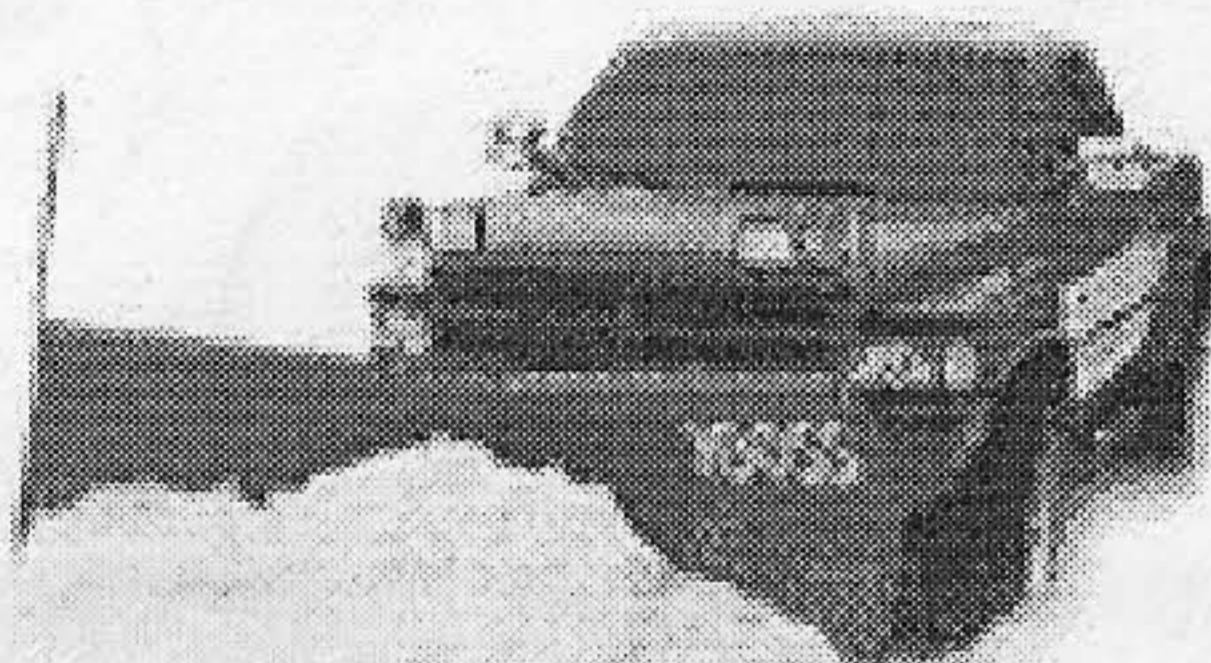
50lbs \$21.95

Credit Card Orders Only

Free Delivery on 2 bags or more

OR

\$10 Delivery Charge
on less than 2 bags



ICE MELT

Do it
"THE
GALLO-WAY"



Safe to area vegetation

ICE MELT will not damage vegetation in the area of application. It is made from materials used in many lawn and garden products.

Easy to use

ICE MELT

Is easy to use - just spread over the surface with any hand held belly grinder or wheeled fertilizer spreader. This will insure even and uniform ice melting.

ICE MELT

ICE MELT PLUS -
25% Magnesium Chloride
75% Potassium Chloride,
effective down to
10 degrees Fahrenheit

Economical

ICE MELT

Apply at a rate of 5—20lbs per 1,000sq. ft

Precautions

ICE MELT

- Should not be applied on to heavily pitted concrete.
- Concrete needs to be cured for at least one year before ICEMELT can be applied onto the surface.

535-9176

WE DELIVER FREE
WITH 2 BAG ORDERS OR MORE

